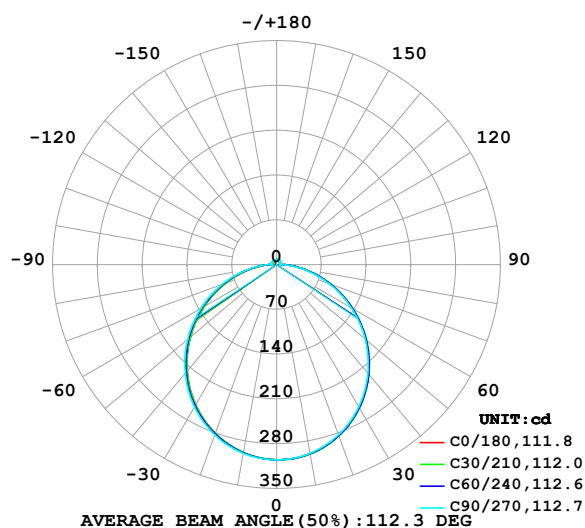


## LUMINAIRE PHOTOMETRIC TEST REPORT

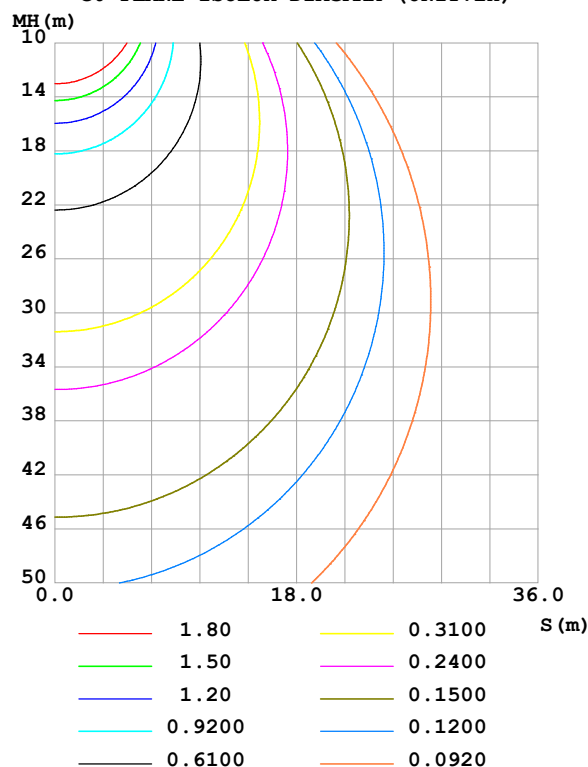
Test:U:24.00V I:0.6304A P:15.13W PF:1.000 Freq:0Hz Lamp Flux:934.772x1 lm		
NAME: SF33-24V-5050-84-3000K-80	TYPE:	WEIGHT:
SPEC.:	DIM.: Length=1m	SERIAL No.:
MFR.: OLympia lighting	SUR.:	Shielding Angle:

DATA OF LAMP		PHOTOMETRIC DATA				Eff: 61.78 lm/W
MODEL	5050	I <sub>max</sub> (cd)	305.2	S/MH(C0/180)	1.24	
NOMINAL POWER(W)	15	LOR(%)	100.0	S/MH(C90/270)	1.25	
RATED VOLTAGE(V)	24	TOTAL FLUX(lm)	934.77	η UP,DN(C0-180)	2.3,47.5	
NOMINAL FLUX(lm)	934.772	CIE CLASS	DIRECT	η UP,DN(C180-360)	2.5,47.7	
LAMPS INSIDE	1	η up (%)	4.8	CIBSE SHR NOM	1.25	
TEST VOLTAGE(V)		η down (%)	95.2	CIBSE SHR MAX	1.35	

LUMINOUS INTENSITY DISTRIBUTION DIAGRAM



C0 PLANE ISOLUX DIAGRAM (UNIT:lx)



C Range: 0 - 360DEG  
C Interval: 30.0DEG  
Test Speed: HIGH  
Temperature:25.3℃  
Operators:  
Test Date:2025-02-18

γ Range: 0 - 180DEG  
γ Interval: 1.0DEG  
Test System:EVERFINE GO-2000B\_V1 SYSTEM V2.00.488  
Humidity:65.0%  
Test Distance:6.360m [K=1.0000]  
Remarks:

## ZONAL FLUX DIAGRAM

## ZONAL FLUX DIAGRAM:

$\gamma$	C0	C45	C90	C135	C180	C225	C270	C315	$\gamma$	$\Phi$ zone	$\Phi$ total	%lum, lamp
10	300.2	300.6	299.8	298.5	298.4	298.5	299.6	300.6	0- 10	28.86	28.86	3.09,3.09
20	284.1	284.8	283.4	281.0	280.6	281.1	283.2	285.0	10- 20	82.55	111.4	11.9,11.9
30	258.0	258.9	256.9	253.8	253.2	254.1	256.9	259.3	20- 30	124.8	236.2	25.3,25.3
40	223.5	224.4	222.1	218.2	217.6	218.8	222.3	225.1	30- 40	150.1	386.3	41.3,41.3
50	182.2	183.1	180.8	176.7	176.2	177.4	181.4	184.2	40- 50	155.4	541.7	58,58
60	136.5	137.4	135.0	130.9	130.6	132.2	136.5	138.9	50- 60	141.1	682.8	73,73
70	89.20	90.18	87.65	84.67	84.34	86.39	90.33	92.15	60- 70	110.3	793.2	84.8,84.8
80	44.29	45.34	42.58	41.14	41.02	43.19	46.15	47.64	70- 80	69.39	862.5	92.3,92.3
90	11.20	10.34	5.449	9.713	11.33	11.59	8.836	12.21	80- 90	27.45	890.0	95.2,95.2
100	5.009	5.777	5.692	6.000	5.312	7.625	8.626	7.085	90-100	7.929	897.9	96.1,96.1
110	5.534	6.190	6.134	6.181	5.143	7.454	8.655	7.284	100-110	6.899	904.8	96.8,96.8
120	6.050	6.555	6.663	6.940	5.734	7.429	8.407	7.395	110-120	6.744	911.6	97.5,97.5
130	6.525	6.882	7.107	7.558	6.296	7.666	8.231	7.366	120-130	6.383	918.0	98.2,98.2
140	6.895	7.008	7.416	7.792	6.777	7.741	8.063	7.200	130-140	5.666	923.6	98.8,98.8
150	7.223	7.282	7.645	7.913	7.166	7.783	7.947	7.174	140-150	4.681	928.3	99.3,99.3
160	7.546	7.594	7.881	7.987	7.506	7.799	7.933	7.304	150-160	3.521	931.8	99.7,99.7
170	7.797	7.854	8.014	7.991	7.705	7.808	7.881	7.665	160-170	2.198	934.0	99.9,99.9
180	7.918	7.985	8.025	7.980	7.915	7.978	8.017	7.971	170-180	0.7520	934.8	100,100
DEG	LUMINOUS INTENSITY:cd									UNIT:lm		

Conical surface Flux(90deg): 464.58 lm

%lum = 49.7%

%lamp = 49.7%

Conical surface Flux(130deg): 742.65 lm

%lum = 79.4%

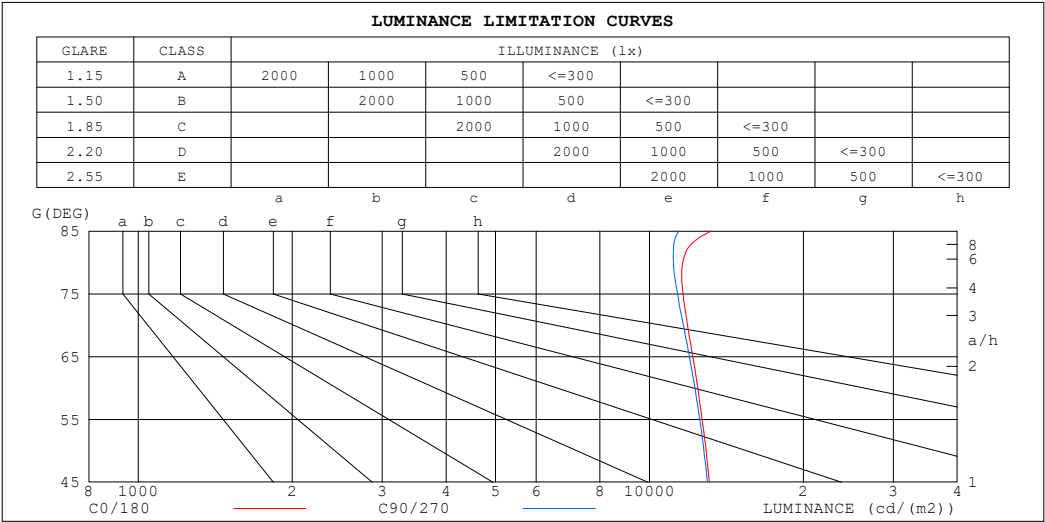
%lamp = 79.4%

C Range: 0 - 360DEG  
 C Interval: 30.0DEG  
 Test Speed: HIGH  
 Temperature:25.3℃  
 Operators:  
 Test Date:2025-02-18

$\gamma$  Range: 0 - 180DEG  
 $\gamma$  Interval: 1.0DEG  
 Test System:EVERFINE GO-2000B\_V1 SYSTEM V2.00.488  
 Humidity:65.0%  
 Test Distance:6.360m [K=1.0000]  
 Remarks:

LUMINANCE LIMITATION CURVES

Test:U:24.00V I:0.6304A P:15.13W PF:1.000 Freq:0Hz Lamp Flux:934.772x1 lm		
NAME: SF33-24V-5050-84-3000K-80	TYPE:	WEIGHT:
SPEC.:	DIM.: Length=1m	SERIAL No.:
MFR.: OLympia lighting	SUR.:	Shielding Angle:



LUMINANCE cd/(m2)		
G (DEG)	C0/180	C90/270
85	13205	11401
80	11609	11139
75	11632	11344
70	11870	11643
65	12153	11969
60	12425	12269
55	12674	12536
50	12903	12778
45	13098	12983

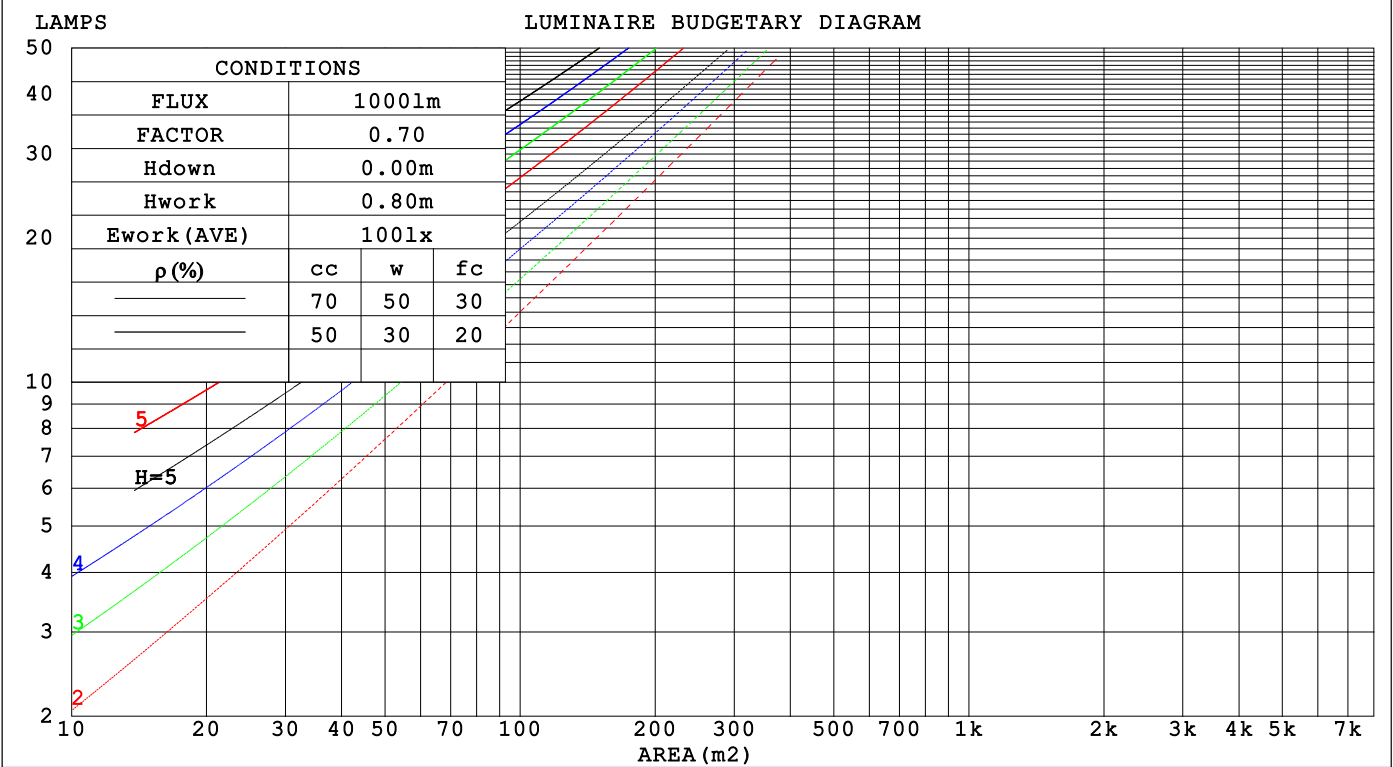
C Range: 0 - 360DEG  
C Interval: 30.0DEG  
Test Speed: HIGH  
Temperature:25.3℃  
Operators:  
Test Date:2025-02-18

γ Range: 0 - 180DEG  
γ Interval: 1.0DEG  
Test System:EVERFINE GO-2000B\_V1 SYSTEM V2.00.488  
Humidity:65.0%  
Test Distance:6.360m [K=1.0000]  
Remarks:

CU AND LUMINAIRE BUDGETARY ESTIMATE DIAGRAM

Test:U:24.00V I:0.6304A P:15.13W PF:1.000 Freq:0Hz		
Lamp Flux:934.772x1 lm		
NAME: SF33-24V-5050-84-3000K-80	TYPE:	WEIGHT:
SPEC.:	DIM.: Length=1m	SERIAL No.:
MFR.: OLYMPIA lighting	SUR.:	Shielding Angle:

pcc	80%			70%			50%			30%			10%			0
pw	50%	30%	10%	50%	30%	10%	50%	30%	10%	50%	30%	10%	50%	30%	10%	0
pfc	20%			20%			20%			20%			20%			0
RCR	RCR:Room Cavity Ratio															



C Range: 0 - 360DEG

C Interval: 30.0DEG

Test Speed: HIGH

Temperature:25.3℃

Operators:

Test Date:2025-02-18

γ Range: 0 - 180DEG

γ Interval: 1.0DEG

Test System:EVERFINE GO-2000B\_V1 SYSTEM V2.00.488

Humidity:65.0%

Test Distance:6.360m [K=1.0000]

Remarks:

## WEC AND CCEC

Test:U:24.00V I:0.6304A P:15.13W PF:1.000 Freq:0Hz Lamp Flux:934.772x1 lm		
NAME: SF33-24V-5050-84-3000K-80	TYPE:	WEIGHT:
SPEC.:	DIM.: Length=1m	SERIAL No.:
MFR.: OLympia lighting	SUR.:	Shielding Angle:

pcc	80%			70%			50%			30%			10%			0														
pw	50%	30%	10%	50%	30%	10%	50%	30%	10%	50%	30%	10%	50%	30%	10%	0														
pfc	20%			20%			20%			20%			20%			0														
RCR	RCR:Room Cavity Ratio															Wall Exitance Coefficients(WEC)														
0.0																														
1.0	.323	.184	.058	.314	.179	.057	.298	.171	.055	.284	.164	.052	.270	.157	.050															
2.0	.298	.163	.050	.291	.160	.049	.276	.154	.048	.263	.148	.046	.251	.142	.045															
3.0	.274	.146	.044	.267	.143	.043	.254	.138	.042	.242	.133	.041	.231	.128	.040															
4.0	.251	.131	.038	.245	.128	.038	.234	.124	.037	.223	.120	.036	.213	.116	.035															
5.0	.232	.118	.034	.226	.116	.034	.216	.112	.033	.206	.109	.032	.198	.106	.032															
6.0	.214	.107	.031	.209	.106	.030	.200	.103	.030	.192	.100	.029	.184	.097	.029															
7.0	.199	.098	.028	.195	.097	.028	.186	.094	.027	.179	.092	.027	.171	.089	.026															
8.0	.186	.091	.026	.182	.089	.025	.174	.087	.025	.167	.085	.024	.161	.082	.024															
9.0	.174	.084	.023	.170	.083	.023	.163	.081	.023	.157	.079	.023	.151	.077	.022															
10.0	.163	.078	.022	.160	.077	.022	.154	.075	.021	.148	.074	.021	.142	.072	.021															

pcc	80%			70%			50%			30%			10%			0
pw	50%	30%	10%	50%	30%	10%	50%	30%	10%	50%	30%	10%	50%	30%	10%	0
pfc	20%			20%			20%			20%			20%			0
RCR	RCR:Room Cavity Ratio						Ceiling Cavity Exitance Coefficients(CCEC)									
0.0	.227	.227	.227	.194	.194	.194	.132	.132	.132	.076	.076	.076	.024	.024	.024	
1.0	.218	.193	.170	.187	.165	.146	.128	.114	.101	.073	.066	.059	.024	.021	.019	
2.0	.210	.169	.134	.180	.145	.116	.123	.101	.081	.071	.059	.047	.023	.019	.015	
3.0	.202	.152	.111	.174	.131	.096	.119	.091	.068	.069	.053	.040	.022	.017	.013	
4.0	.195	.138	.095	.167	.120	.083	.115	.083	.058	.066	.049	.035	.021	.016	.011	
5.0	.187	.128	.085	.161	.111	.074	.111	.077	.052	.064	.045	.031	.021	.015	.010	
6.0	.180	.120	.077	.155	.104	.067	.107	.073	.047	.062	.043	.028	.020	.014	.009	
7.0	.173	.113	.071	.149	.098	.062	.103	.069	.044	.060	.040	.026	.019	.013	.009	
8.0	.167	.107	.067	.144	.093	.058	.099	.065	.041	.058	.039	.025	.019	.013	.008	
9.0	.161	.102	.063	.138	.089	.055	.096	.062	.039	.056	.037	.023	.018	.012	.008	
10.0	.155	.098	.060	.134	.085	.053	.093	.060	.037	.054	.035	.022	.018	.012	.007	

C Range: 0 - 360DEG  
C Interval: 30.0DEG  
Test Speed: HIGH  
Temperature:25.3℃  
Operators:  
Test Date:2025-02-18

γ Range: 0 - 180DEG  
γ Interval: 1.0DEG  
Test System:EVERFINE GO-2000B\_V1 SYSTEM V2.00.488  
Humidity:65.0%  
Test Distance:6.360m [K=1.0000]  
Remarks:

UGR(Unified Glare Rating) Table

Test:U:24.00V I:0.6304A P:15.13W PF:1.000 Freq:0Hz Lamp Flux:934.772x1 lm											
NAME: SF33-24V-5050-84-3000K-80						TYPE:		WEIGHT:			
SPEC.:						DIM.: Length=1m		SERIAL No.:			
MFR.: OLympia lighting						SUR.:		Shielding Angle:			
ceiling/cavity	0.7	0.7	0.5	0.5	0.3	0.7	0.7	0.5	0.5	0.3	
walls	0.5	0.3	0.5	0.3	0.3	0.5	0.3	0.5	0.3	0.3	
working plane	0.2	0.2	0.2	0.2	0.2	0.2	0.2	0.2	0.2	0.2	
Room dimensions		Viewed crosswise					Viewed endwise				
x = 2H y = 2H	2H	22.6	24.1	22.9	24.3	24.6	22.5	24.0	22.9	24.3	24.6
	3H	24.2	25.6	24.6	25.9	26.2	24.1	25.5	24.5	25.8	26.2
	4H	24.9	26.2	25.3	26.5	26.9	24.8	26.1	25.2	26.5	26.8
	6H	25.5	26.7	25.9	27.1	27.4	25.4	26.6	25.8	27.0	27.3
	8H	25.7	26.9	26.1	27.3	27.7	25.6	26.8	26.0	27.1	27.5
	12H	25.9	27.1	26.3	27.4	27.8	25.8	26.9	26.2	27.3	27.7
4H	2H	23.2	24.5	23.6	24.8	25.2	23.2	24.5	23.6	24.8	25.2
	3H	25.0	26.2	25.5	26.5	26.9	25.0	26.1	25.4	26.5	26.9
	4H	25.9	26.9	26.3	27.3	27.7	25.8	26.8	26.3	27.2	27.7
	6H	26.6	27.5	27.1	28.0	28.4	26.5	27.4	27.0	27.9	28.3
	8H	26.9	27.8	27.4	28.2	28.7	26.8	27.6	27.3	28.1	28.6
	12H	27.2	28.0	27.7	28.4	28.9	27.0	27.8	27.5	28.3	28.8
8H	4H	26.2	27.0	26.7	27.5	28.0	26.1	27.0	26.6	27.4	27.9
	6H	27.1	27.8	27.6	28.3	28.8	27.0	27.7	27.5	28.2	28.8
	8H	27.5	28.2	28.1	28.7	29.2	27.4	28.1	28.0	28.6	29.1
	12H	27.9	28.5	28.5	29.0	29.6	27.8	28.3	28.3	28.8	29.4
12H	4H	26.2	27.0	26.7	27.5	28.0	26.2	26.9	26.7	27.4	27.9
	6H	27.2	27.8	27.7	28.3	28.9	27.1	27.8	27.7	28.3	28.8
	8H	27.7	28.2	28.2	28.8	29.3	27.6	28.1	28.1	28.7	29.2
Variations with the observer position at spacings(CIE Pub.117):											
S = 1.0H		+ 0.1 / - 0.2					+ 0.1 / - 0.2				
1.5H		+ 0.2 / - 0.3					+ 0.2 / - 0.3				
2.0H		+ 0.1 / - 0.3					+ 0.1 / - 0.3				

CIE Pub.117, 934.8 lm Total Lamp Luminous Flux Correct (8log(F/F0) = -0.2)  
Area: 0.022 m2

C Range: 0 - 360DEG  
C Interval: 30.0DEG  
Test Speed: HIGH  
Temperature:25.3℃  
Operators:  
Test Date:2025-02-18

γ Range: 0 - 180DEG  
γ Interval: 1.0DEG  
Test System:EVERFINE GO-2000B\_V1 SYSTEM V2.00.488  
Humidity:65.0%  
Test Distance:6.360m [K=1.0000]  
Remarks:

## UTILIZATION FACTORS TABLE

Test:U:24.00V I:0.6304A P:15.13W PF:1.000 Freq:0Hz Lamp Flux:934.772x1 lm		
NAME: SF33-24V-5050-84-3000K-80	TYPE:	WEIGHT:
SPEC.:	DIM.: Length=1m	SERIAL No.:
MFR.: OLympia lighting	SUR.:	Shielding Angle:

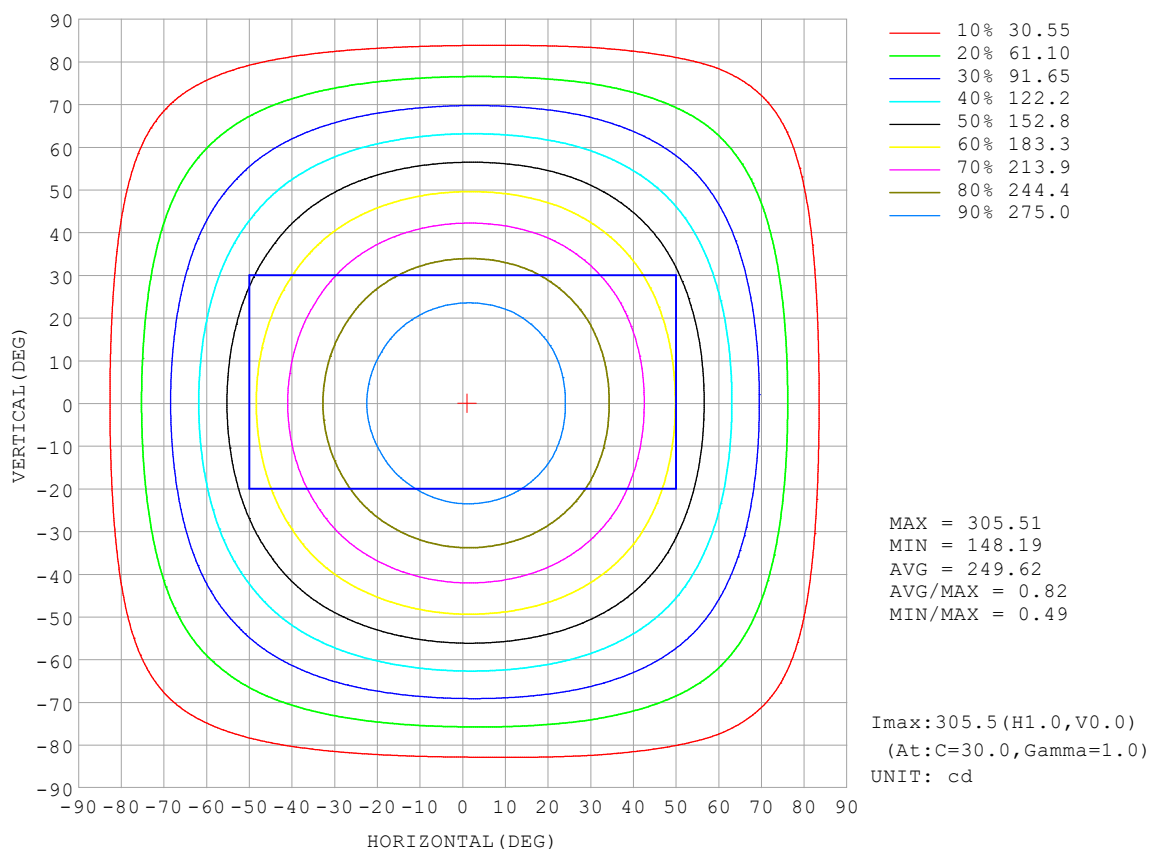
REFLECTANCE										
Ceiling	0.8	0.8	0.8	0.7	0.7	0.7	0.5	0.5	0.5	0
Walls	0.7	0.5	0.3	0.7	0.5	0.3	0.7	0.5	0.3	0
Working plane	0.2	0.2	0.2	0.2	0.2	0.2	0.2	0.2	0.2	0
ROOM INDEX	UTILIZATION FACTORS (PERCENT) $k(RI) \times RCR = 5$									
$k = 0.60$	56	44	37	55	44	37	53	43	36	30
0.80	65	54	46	64	53	46	62	52	45	38
1.00	74	62	55	72	61	54	70	63	54	46
1.25	81	70	62	79	69	62	76	67	61	53
1.50	86	75	68	84	74	67	80	72	66	58
2.00	93	84	77	90	82	76	86	79	74	65
2.50	97	88	82	94	87	81	90	83	78	69
3.00	100	93	87	97	91	85	93	87	83	73
4.00	104	98	93	101	96	91	96	92	88	78
5.00	107	101	97	104	99	95	98	95	91	81
ROOM INDEX	UF (total)									Direct
According to DIN EN 13032-2 2004			Suspended					SHRNOM = 1.25		

C Range: 0 - 360DEG  
 C Interval: 30.0DEG  
 Test Speed: HIGH  
 Temperature: 25.3 °C  
 Operators:  
 Test Date: 2025-02-18

γ Range: 0 - 180DEG  
 γ Interval: 1.0DEG  
 Test System: EVERFINE GO-2000B\_V1 SYSTEM V2.00.488  
 Humidity: 65.0%  
 Test Distance: 6.360m [K=1.0000]  
 Remarks:

## ISOCANDELA DIAGRAM

Test:U:24.00V I:0.6304A P:15.13W PF:1.000 Freq:0Hz Lamp Flux:934.772x1 lm		
NAME: SF33-24V-5050-84-3000K-80	TYPE:	WEIGHT:
SPEC.:	DIM.: Length=1m	SERIAL No.:
MFR.: OLympia lighting	SUR.:	Shielding Angle:

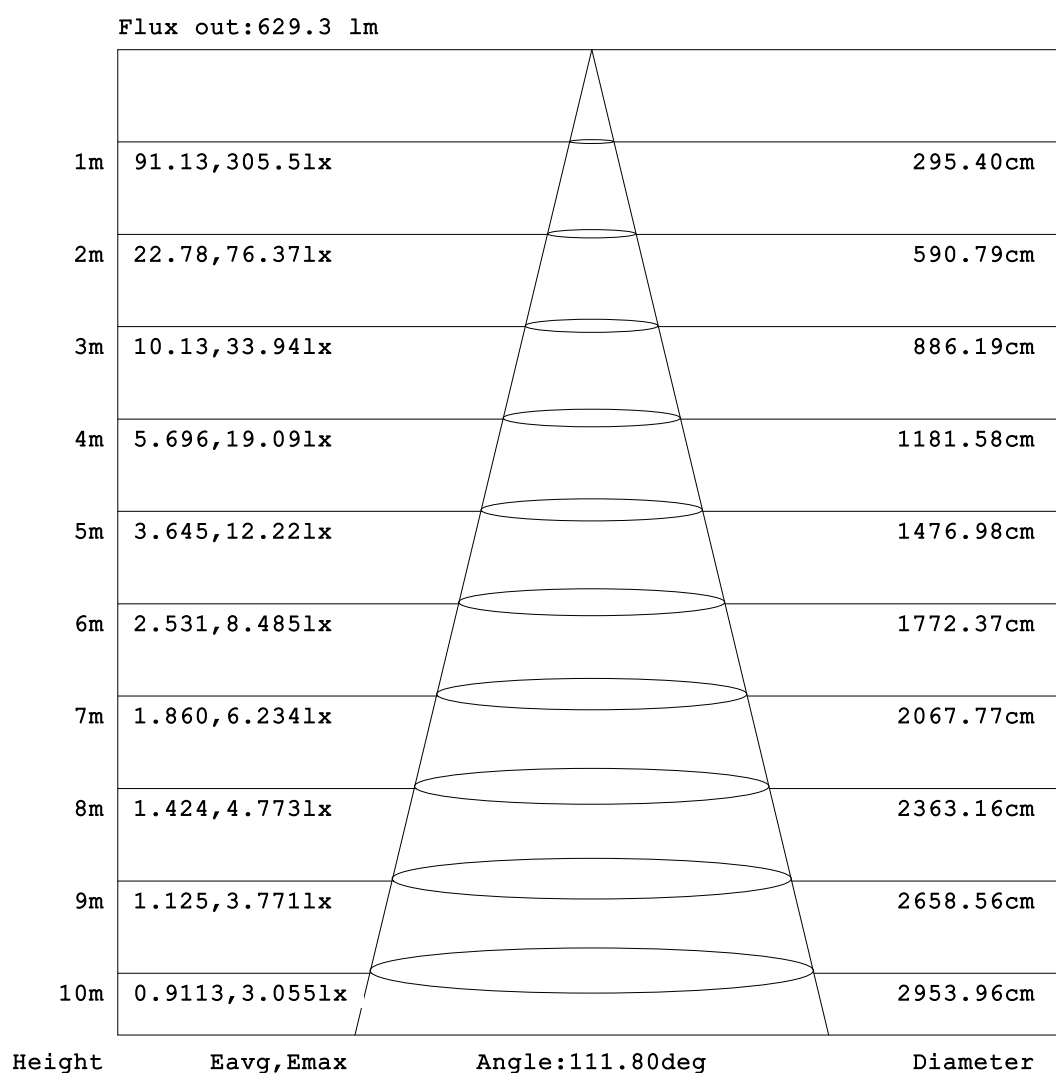


C Range: 0 - 360DEG  
C Interval: 30.0DEG  
Test Speed: HIGH  
Temperature:25.3℃  
Operators:  
Test Date:2025-02-18

γ Range: 0 - 180DEG  
γ Interval: 1.0DEG  
Test System:EVERFINE GO-2000B\_V1 SYSTEM V2.00.488  
Humidity:65.0%  
Test Distance:6.360m [K=1.0000]  
Remarks:

## AAI Figure

Test:U:24.00V I:0.6304A P:15.13W PF:1.000 Freq:0Hz Lamp Flux:934.772x1 lm		
NAME: SF33-24V-5050-84-3000K-80	TYPE:	WEIGHT:
SPEC.:	DIM.: Length=1m	SERIAL No.:
MFR.: OLympia lighting	SUR.:	Shielding Angle:



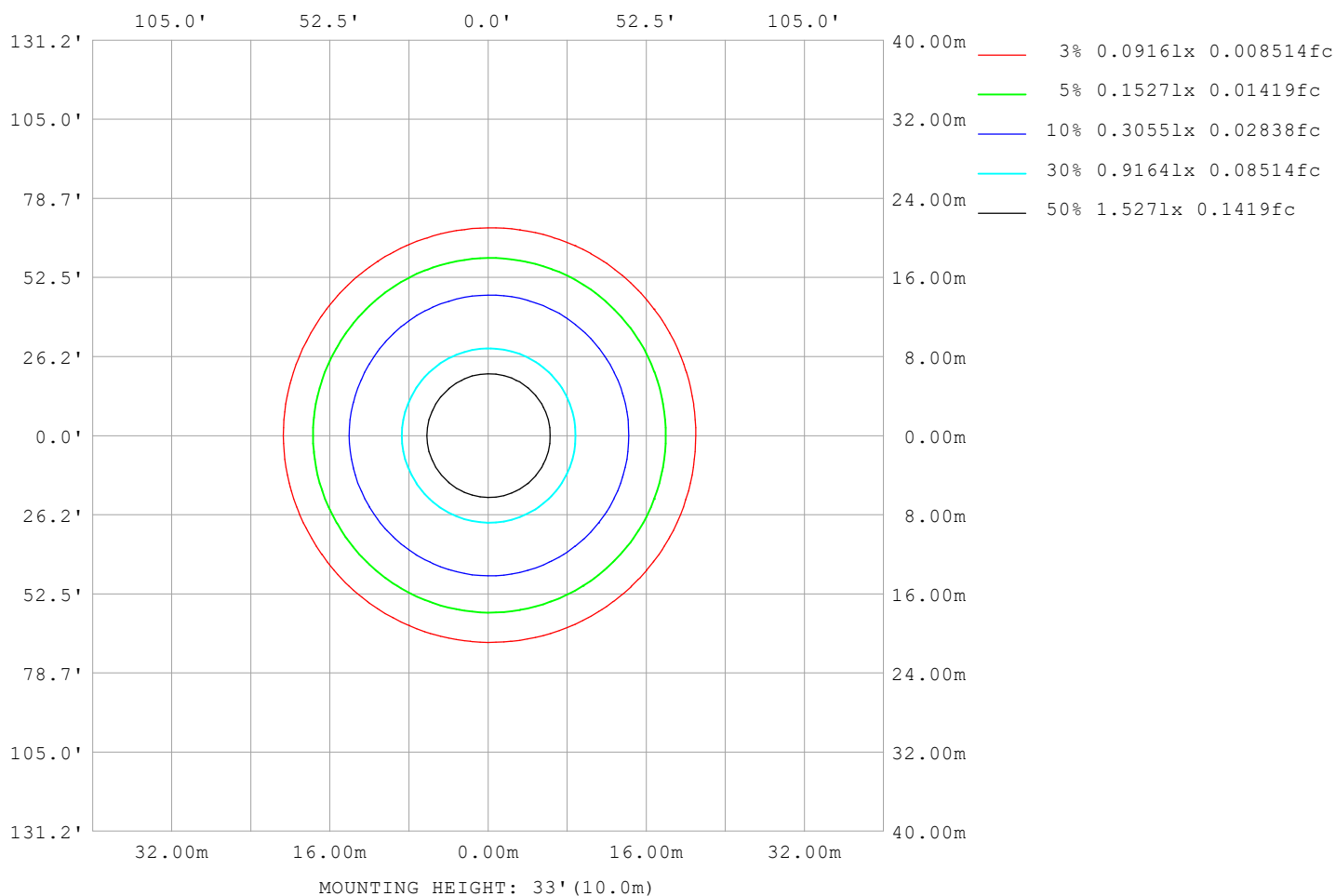
Note: The Curves indicate the illuminated area and the average illumination when the luminaire is at different distance.

C Range: 0 - 360DEG  
C Interval: 30.0DEG  
Test Speed: HIGH  
Temperature: 25.3°C  
Operators:  
Test Date: 2025-02-18

γ Range: 0 - 180DEG  
γ Interval: 1.0DEG  
Test System: EVERFINE GO-2000B\_V1 SYSTEM V2.00.488  
Humidity: 65.0%  
Test Distance: 6.360m [K=1.0000]  
Remarks:

## ISOLUX DIAGRAM

Test:U:24.00V I:0.6304A P:15.13W PF:1.000 Freq:0Hz Lamp Flux:934.772x1 lm		
NAME: SF33-24V-5050-84-3000K-80	TYPE:	WEIGHT:
SPEC.:	DIM.: Length=1m	SERIAL No.:
MFR.: OLympia lighting	SUR.:	Shielding Angle:



C Range: 0 - 360DEG  
C Interval: 30.0DEG  
Test Speed: HIGH  
Temperature: 25.3°C  
Operators:  
Test Date: 2025-02-18

γ Range: 0 - 180DEG  
γ Interval: 1.0DEG  
Test System: EVERFINE GO-2000B\_V1 SYSTEM V2.00.488  
Humidity: 65.0%  
Test Distance: 6.360m [K=1.0000]  
Remarks:

## LED Avg.L Report

Test:U:24.00V I:0.6304A P:15.13W PF:1.000 Freq:0Hz Lamp Flux:934.772x1 lm		
NAME: SF33-24V-5050-84-3000K-80	TYPE:	WEIGHT:
SPEC.:	DIM.: Length=1m	SERIAL No.:
MFR.: OLympia lighting	SUR.:	Shielding Angle:

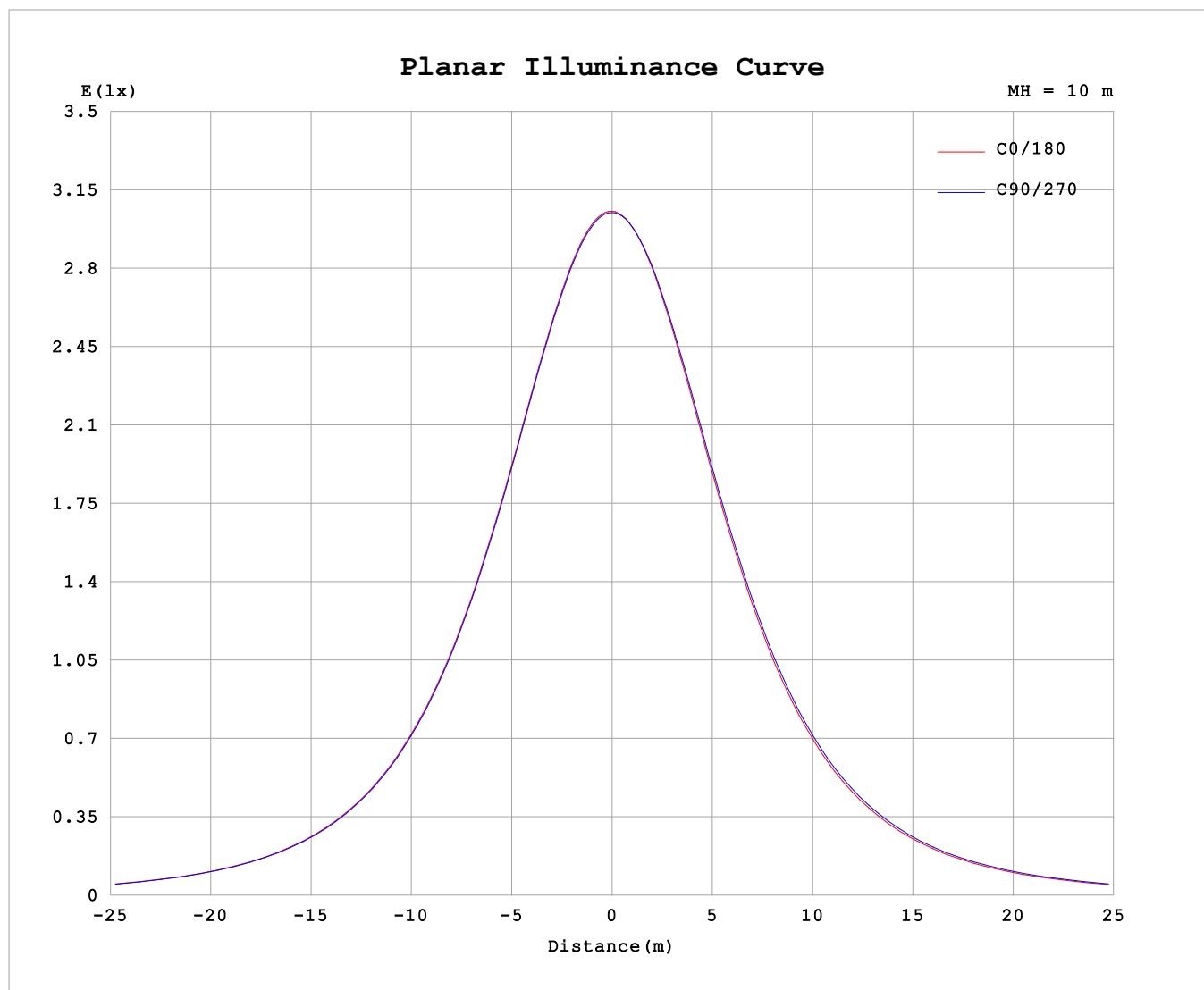
AvgL	cd/m2
L_0~180 (65) av	11845
L_0~180 (75) av	11259
L_0~180 (85) av	12330
L_90~270 (65) av	12084
L_90~270 (75) av	11624
L_90~270 (85) av	12396
L_45 (65) av	12002
L_45 (75) av	11572
L_45 (85) av	12803

Standard: GB/T 29293-2012

C Range: 0 - 360DEG  
C Interval: 30.0DEG  
Test Speed: HIGH  
Temperature:25.3℃  
Operators:  
Test Date:2025-02-18

γ Range: 0 - 180DEG  
γ Interval: 1.0DEG  
Test System:EVERFINE GO-2000B\_V1 SYSTEM V2.00.488  
Humidity:65.0%  
Test Distance:6.360m [K=1.0000]  
Remarks:

## Planar Illuminance Curve



C Range: 0 - 360DEG  
C Interval: 30.0DEG  
Test Speed: HIGH  
Temperature: 25.3 °C  
Operators:  
Test Date: 2025-02-18

$\gamma$  Range: 0 - 180DEG  
 $\gamma$  Interval: 1.0DEG  
Test System: EVERFINE GO-2000B\_V1 SYSTEM V2.00.488  
Humidity: 65.0%  
Test Distance: 6.360m [K=1.0000]  
Remarks:

## LUMINOUS DISTRIBUTION INTENSITY DATA

Test:U:24.00V I:0.6304A P:15.13W PF:1.000 Freq:0Hz Lamp Flux:934.772x1 lm		
NAME: SF33-24V-5050-84-3000K-80	TYPE:	WEIGHT:
SPEC.:	DIM.: Length=1m	SERIAL No.:
MFR.: OLYMPIA lighting	SUR.:	Shielding Angle:

Table--1

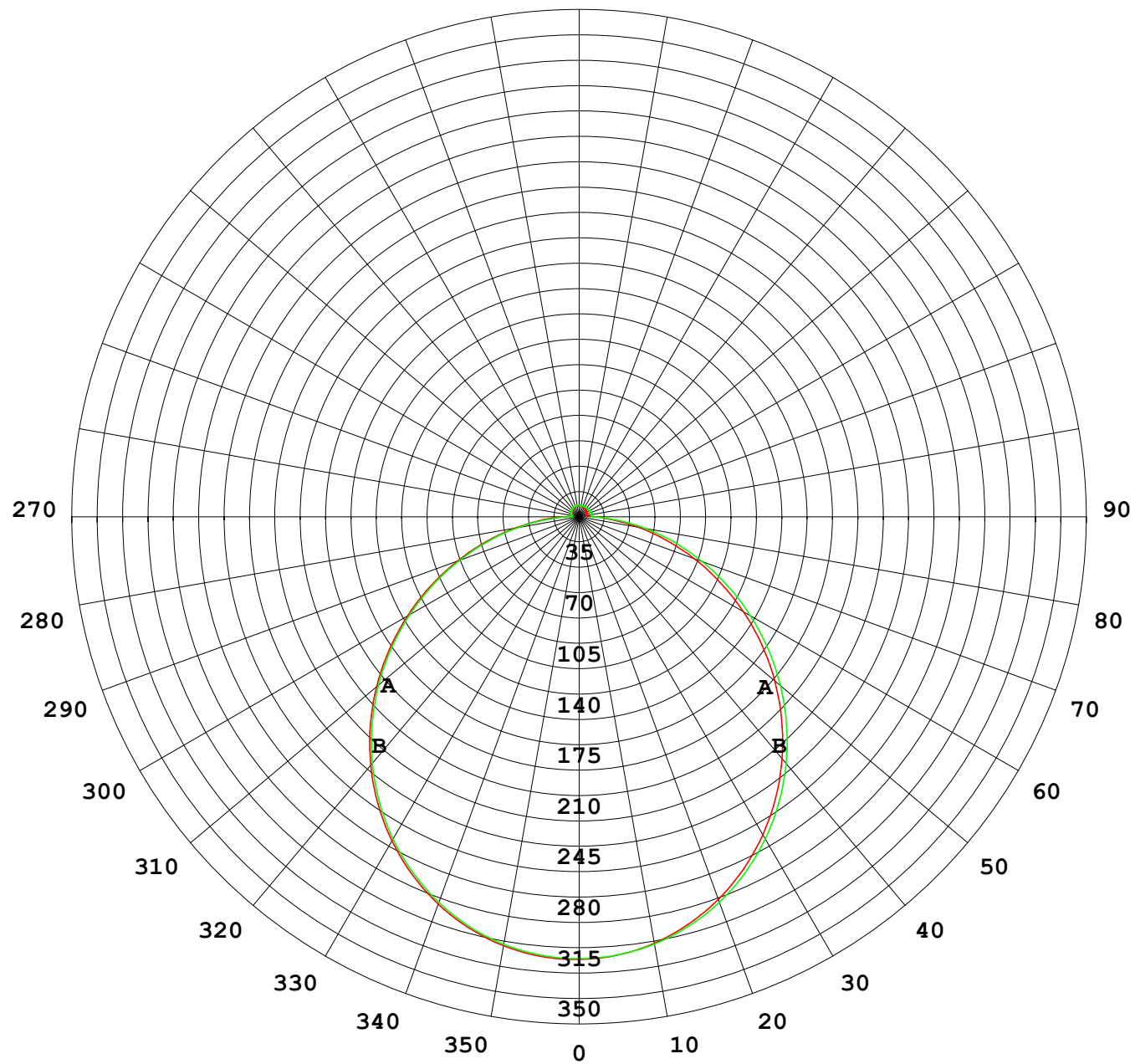
UNIT: cd

C (DEG) γ (DEG)	0	30	60	90	120	150	180	210	240	270	300	330						
0	305	305	305	305	305	305	305	305	305	305	305	305						
5	304	304	304	304	303	303	303	303	303	304	304	304						
10	300	301	300	300	299	298	298	298	299	300	300	301						
15	293	294	294	293	292	291	291	291	292	293	294	294						
20	284	285	285	283	282	280	281	280	282	283	285	285						
25	272	273	273	271	269	268	268	268	269	271	273	273						
30	258	259	259	257	255	253	253	253	255	257	259	259						
35	242	243	242	240	238	236	236	236	238	241	243	243						
40	223	225	224	222	219	217	218	218	220	222	225	225						
45	203	205	204	202	199	197	197	197	200	203	205	205						
50	182	183	183	181	178	176	176	176	179	181	184	184						
55	160	161	160	158	155	153	154	153	157	159	162	162						
60	137	138	137	135	132	130	131	131	134	136	139	139						
65	113	114	114	111	109	106	107	108	111	113	116	115						
70	89.2	90.3	90.0	87.7	85.9	83.5	84.3	84.8	87.9	90.3	92.5	91.8						
75	66.2	67.5	67.0	64.6	63.4	61.4	62.1	62.8	65.7	67.7	69.7	69.0						
80	44.3	45.7	45.0	42.6	41.8	40.5	41.0	42.0	44.4	46.1	47.9	47.4						
85	25.3	26.2	24.5	21.9	21.2	21.4	22.0	22.8	24.4	25.7	27.5	27.7						
90	11.2	11.6	9.10	5.45	8.50	10.9	11.3	11.9	11.3	8.84	11.6	12.8						
95	4.97	5.51	5.91	5.51	6.17	6.86	6.61	7.65	8.65	8.67	7.97	6.21						
100	5.01	5.55	6.00	5.69	5.94	6.06	5.31	6.83	8.42	8.63	8.03	6.14						
105	5.27	5.77	6.16	5.90	6.00	5.95	5.03	6.60	8.38	8.67	8.06	6.28						
110	5.53	6.02	6.36	6.13	6.30	6.06	5.14	6.56	8.35	8.66	8.13	6.44						
115	5.78	6.26	6.57	6.41	6.76	6.36	5.41	6.62	8.27	8.49	8.12	6.59						
120	6.05	6.48	6.63	6.66	7.18	6.70	5.73	6.81	8.04	8.41	8.07	6.72						
125	6.29	6.67	6.76	6.90	7.46	7.12	6.03	7.03	8.17	8.32	7.94	6.81						
130	6.53	6.83	6.93	7.11	7.62	7.50	6.30	7.16	8.17	8.23	7.90	6.84						
135	6.72	6.67	7.07	7.27	7.71	7.69	6.53	7.28	8.15	8.15	7.82	6.65						
140	6.89	6.82	7.19	7.42	7.79	7.80	6.78	7.38	8.11	8.06	7.75	6.66						
145	7.06	6.98	7.31	7.54	7.86	7.87	6.98	7.47	8.06	7.97	7.67	6.70						
150	7.22	7.15	7.42	7.64	7.91	7.91	7.17	7.55	8.02	7.95	7.59	6.76						
155	7.39	7.32	7.55	7.77	7.96	7.96	7.35	7.61	7.97	7.99	7.70	6.82						
160	7.55	7.50	7.68	7.88	7.98	7.99	7.51	7.66	7.94	7.93	7.70	6.91						
165	7.69	7.67	7.78	7.96	8.00	7.99	7.65	7.70	7.90	7.92	7.71	7.08						
170	7.80	7.83	7.88	8.01	8.00	7.98	7.71	7.76	7.85	7.88	7.74	7.59						
175	7.86	7.92	7.96	8.03	8.01	7.97	7.84	7.84	7.90	7.87	7.82	7.75						
180	7.92	7.96	8.01	8.03	8.00	7.96	7.92	7.95	8.00	8.02	8.00	7.94						

C Range: 0 - 360DEG  
C Interval: 30.0DEG  
Test Speed: HIGH  
Temperature:25.3℃  
Operators:  
Test Date:2025-02-18

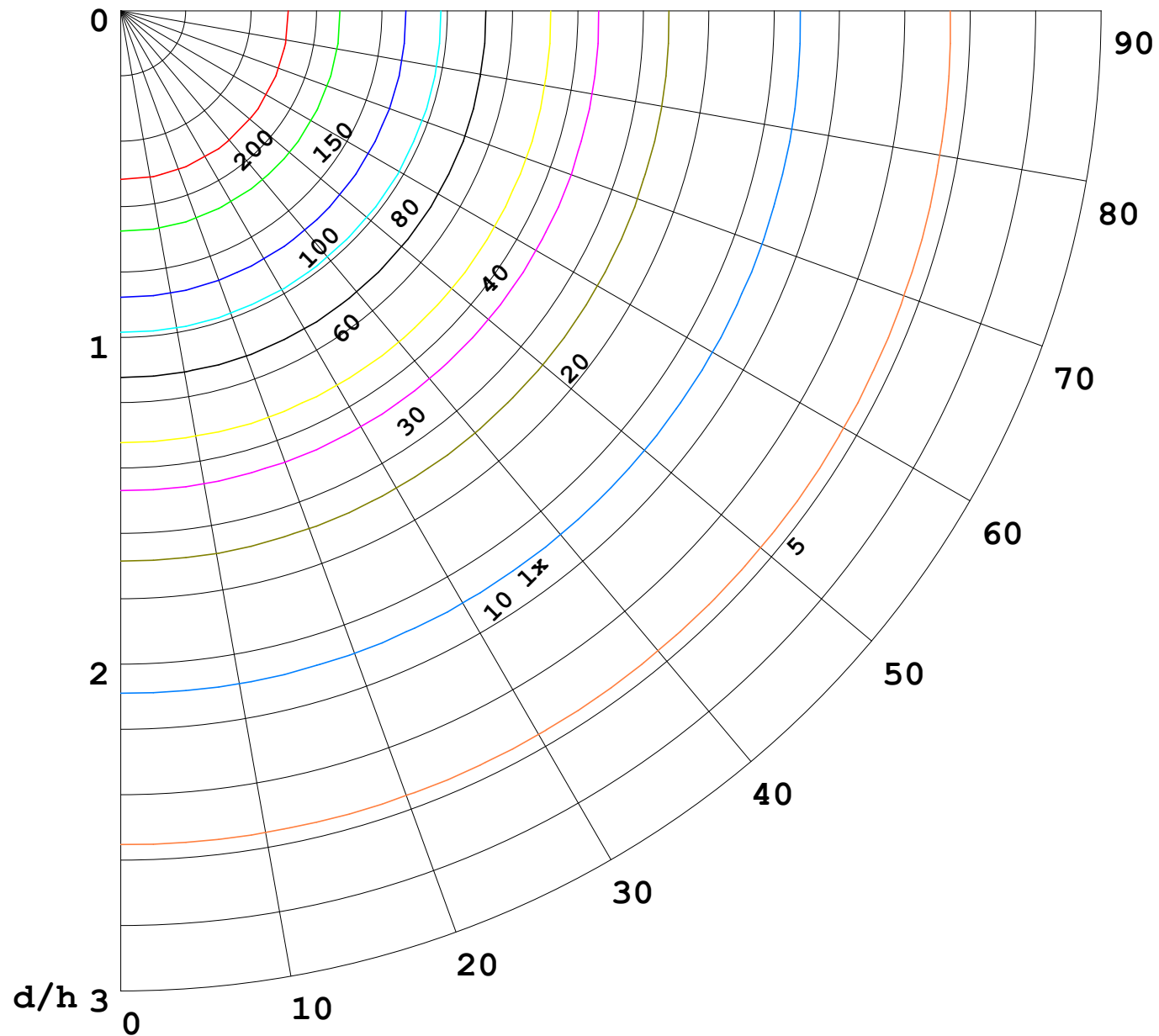
γ Range: 0 - 180DEG  
γ Interval: 1.0DEG  
Test System:EVERFINE GO-2000B\_V1 SYSTEM V2.00.488  
Humidity:65.0%  
Test Distance:6.360m [K=1.0000]  
Remarks:

I (cd)



1000 lm

$\kappa = 1$



F = 1000 lm  
 K = 0.7  
 Hcc = 0.8 m  
 Hfc = 0.0 m  
 Eave = 100 lx

	Pcc	Pw	Pfc
—————	70	50	30
—————	50	30	20

